

# RESTORATIVES

---

**PINEAPPLE EXPRESS** 5  
pineapple juice, honey, lemon, mint

**LIVER RECOVERY** 5  
strawberry, pressed apple, banana, sugar syrup

**BANANA & MAPLE** 5  
banana, maple syrup, milk

**FRESH ORANGE JUICE** 3

## TIPPLE

---

**BLOODY MARY** 9  
Sophie's mix, vodka

**ESPRESSO MARTINI** 12  
vodka, frangelico, kahlua, espresso

**MIMOSA** 12  
prosecco, fresh orange

**WATERMELON MARTINI** 12  
vodka, fresh watermelon, vanilla sugar syrup

## SUNDAY ROAST Served all day from 12 noon

---

*Served with a giant Yorkshire pud, roast spuds, seasonal veg & lashings of gravy*

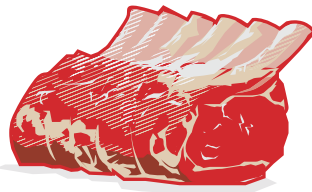
**ROFFORD FARM BEEF** from 16  
pure breed Aberdeen Angus beef from Sophie's family farm in Oxfordshire

**RED DEVON CHICKEN** quarter / half / whole 8/15/25  
corn fed, free range

**THICK CUT PRIME RIB** 25  
slow roasted West Country rib

**KIDS MINI ROAST** 10  
Red Devon chicken or Rofford farm beef

*Book a table & order a whole prime rib to share (24 hours notice required)*



**SUNDAY AT SOPHIE'S**